

Think Globally but Eat Locally

Sustainable and Local Food choices

Anna Valášková
Lipka Brno
Primary level of education



Funded by the European Union. Views and opinions expressed are however those of the author(s) only and do not necessarily reflect those of the European Union or the European Education and Culture Executive Agency (EACEA). Neither the European Union nor EACEA can be held responsible for them.



**Co-funded by
the European Union**

I will implement my scenario in: 5th to 9th grade

The duration of the implementation is: 4 hours

My scenario goals are:

1. **Understanding food chains**
2. **Understanding transport** impact (emissions, quality, chemicals)
3. **Understanding meat and dairy industry** impact
4. **Knowledge of local food** sources, **community**
5. **UNDERSTANDING MY ROLE AND HOW I CAN HAVE A POSITIVE IMPACT**

How will I achieve my educational goals?

educational goals

Through **4 lessons** I will teach students to think about the **food they eat**, the **source** of it and the **impact** it's production and transport has on the **planet and other beings**. They will learn about more sustainable practices and choices they can make every day.

1st lesson: Food chains and transport

2nd lesson: Meat and dairy industry, plant based food sources

3rd lesson: Local food sources, seasonality, consumer choices

4th lesson: Community, alternative food chains

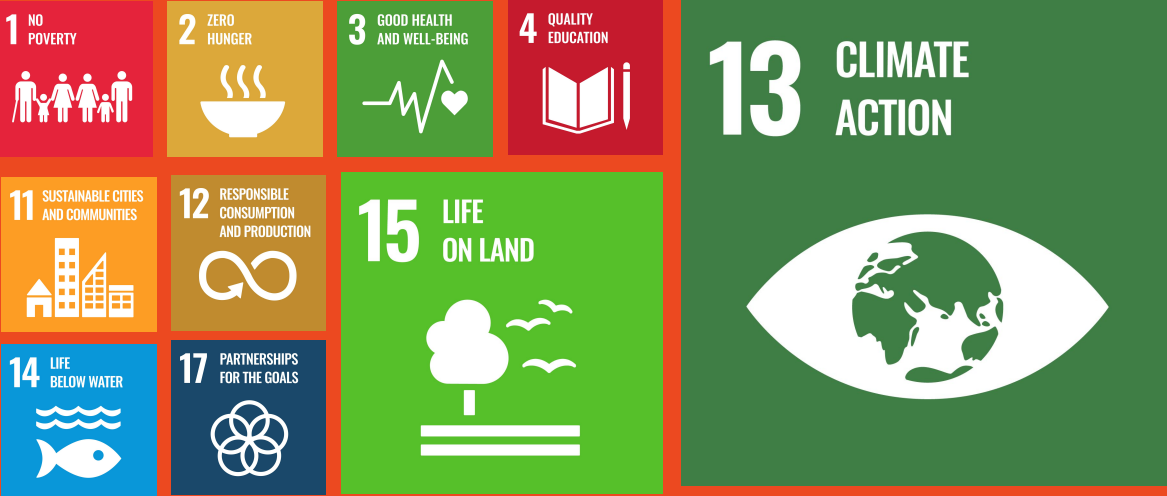
In the end of the lessons each student should understand their impact on nature through food choices and will say one goal they want to focus on in the next months (buying seasonal fruit produced locally for example).



Map of the world
Calculating emissions
Videos, pictures
Shop game
Cooking/tasting



This activity links to the Sustainable Development Goals:



The green competences that promoted from my scenario are:

Embodying Sustainable Values	Valuing Sustainability	Supporting Fairness	Promoting Nature
Embracing Complexity in Sustainability	Systems Thinking	Critical Thinking	
Acting for Sustainability		Collective Action	Individual Initiative



I will collaborate with:

- 1st external stakeholder (local farm, organisation) by doing an activity of doing a virtual tour/video projection of an organic farm and community supported agriculture in our area
- 2nd external stakeholder (scientific organisation, university, reasearch) by using and interpreting data from emissions from transport and animal agriculture

Here is my plan for integrating this scenario in my school this year:

I will propose a programme suggestion to the school leaders.

I will create methodology and theoretical background for the programme.

I will start (hopefully) teaching the programme.

